



Oracle Utilities Data Migration, Conversion, and Automation Future-Proofing Your Data

The utilities industry is in the middle of an exciting change, growing into a more digitized, decentralized system. Conventional business processes, market participants, and ways of functioning are being disrupted and transforming quickly.

Many utilities have already begun their journey to the cloud with the incremental adoption of infrastructure, but undertaking an enterprise strategy has been challenging. These challenges can be subdued. Getting value requires a holistic system that blends modern technology with new ways of working that include cloud computing.

What Does Data Have to Do with It?

Risks to organizational performance

Business is constantly changing; from mergers and acquisitions to technology innovations and upgrades, these changes often create silos of information holding inconsistent and unnecessary data.

Utility models based on incorrect or inadequate data constantly risk organizational performance due to faulty simulations, analysis, and processes that produce misleading results or system errors. When utilities operate using insufficient or bad data, network reliability and customer experience suffer.

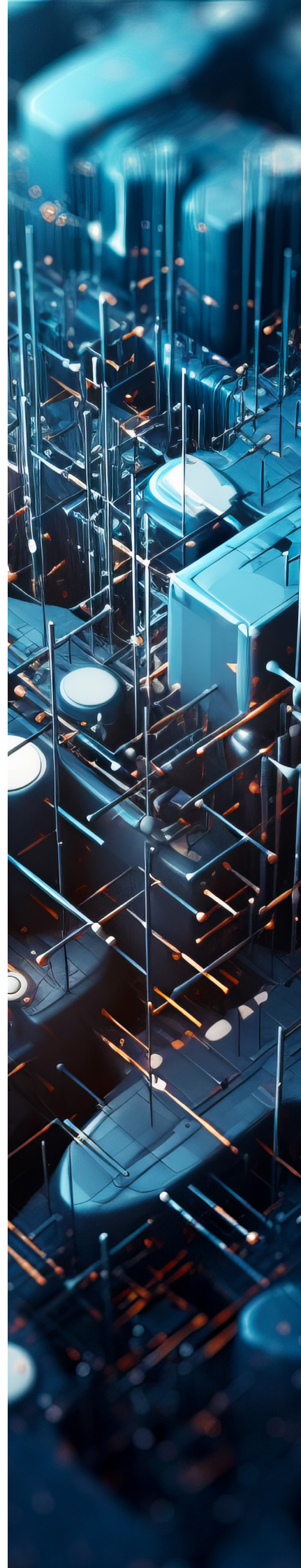
Data Migration versus Data Conversion

Data migration is the process of extracting data from a legacy system and combining it with a new one. Miscalculating this task is one of the most basic blunders in an IT project. Moving data without an adequate cleaning system and without data validation inhibits the accurate behavior of the new system.

Data conversion is the process of validating and cleansing raw data. It is a crucial step in the process that turns raw data into important, usable information.

Data Automation for Utilities

As utilities strive to get more timely, reliable data about their customers and assets, data related to customer accounts, consumption behaviors, work, outages, and assets can be spread across many systems. CriticalRiver solves this challenge by allowing users to build, maintain, and distribute information about all these elements using intelligent automation of data. This presents a new framework for utility operations to share data across time, locations, and systems. CriticalRiver introduces data automation for utilities.



What is Data Automation?

It frequently happens in an organization that a system is extended beyond its intended life. Therefore, the time factor plays a significant role in a company's ability to grow and thrive. The more time that goes by, the more data is accumulated, and new innovative ways of interpreting and interrogating data come into the picture. **Data automation** is designed to assist your organization in this respect.

Data automation uses AI-driven methods to collect, process, interrogate, and expose data to digital consumers. Automation replaces manual execution or human interference with machines, software, and emerging AI applications.

Putting it All Together: Data Migration, Conversion, and Automation

As utilities push for a digital transformation, this disruption comes with an equal opportunity for change. Now is the time to automate and normalize data collection, access, analysis, interpretation, storage, migration, conversion, and archiving. Now is the time for data automation.

Non-congruent data, stranded data, lost data, bad dates, data silos, manual processes, and errors all lead to the same inevitable outcome: increased costs and lost revenue. Add to that the pricey and long waiting periods for deploying legacy data into new innovative systems and technologies, and the case for data automation writes itself: it's time to "future-proof" utility data!

Immediate opportunities for improvement exist in areas like customer experience, energy management, asset condition and productivity, outage and restoration, revenue management, consumption behavior, and new revenue opportunities, to name a few.

CriticalRiver's Data Services for Utilities

CriticalRiver provides automated and prebuilt, script-driven data migration services for Oracle Utilities applications and edge products. These services are available to all our global clients, both onsite and online. CriticalRiver helps utilities use their data more efficiently and effectively. To accomplish this, ILM (Information Life Cycle Management) is configured through our pre-built scripts in order to leverage the benefits of application transparency, fine-grained data, low-cost storage, and enforce compliance policies that ILM provides.

CriticalRiver's data services enable and empower our clients to automate data through ILM. This unleashes several key benefits at the enterprise level, including:

- Seamless and perpetual data availability (old, archived, and new data).
- No manual intervention is required after the initial configuration of the system.
- Automated data manageability, accessibility, and reportability.
- Data storage and access boundaries are extended to any level required.
- Optimal use of system storage.
- Enforceability of data compliance and security policies.
- Data exists as a service rather than a vulnerable endpoint.
- Data is encrypted and secured against ransomware attacks and other malicious intentions.

Data Service Offerings

Express Conversion Method (ECM)

Fast track for utilities to transfer data from their legacy systems into their target systems. This methodology is recommended when there is a time constraint with minimum customization (not more than 5%), which is impacting data requirements. Timelines for project completion are between 6 and 7 months in total, based on defined parameters and prerequisites.

Advantages

- The fastest way to migrate data for use in the target application.
- Reduced effort, schedule, and cost for the project

Standard Conversion Method (SCM)

It is best for clients with a few customizations (10%) that are impacting data requirements for the solution, and the necessary changes can be managed using our pre-built data migration scripts. The timeline for these projects is usually between 8 and 12 months in total, based on defined parameters and prerequisites.

Advantages

- Cover customization up to 10% (which is impacting data requirements).
- Save effort, time, and cost for the project by using pre-built scripts

Tailored Conversion Method (TCM)

Best for projects driven strictly by the client's requirements. Whatever level of customization and no matter what timeline the client wants, tailored data migration scripts will be developed according to those needs, and a detailed migration strategy will be formulated based on the consensus of the client stakeholders and the completion of requirements gathering and analysis activities.

Advantages

- Complete freedom of customization
- Tailor-made data migration method specific to the client's requirements
- No data restrictions: it will cover whatever customer wants to migrate

Data Automation

Advantages

- Data is automated as a service, meaning it is available to all systems and end users at machine speed without manual conversion processes or archiving.
- Automation is developed by Oracle-certified and Utilities industry-experienced professionals.
- Our Data Services team members typically possess over a decade of Oracle Utilities data migration experience.
- A global delivery model with resources in the USA, Middle East, Philippines, and India to deliver data services in a cost-effective, scalable, and responsive manner.



The CriticalRiver Value Proposition!

CriticalRiver allows utilities to elevate the customer experience, improve operational performance, and enhance asset utilization while improving data governance for regulators and customers.

- Migrate data with no compromise on data quality
- Access historical data seamlessly
- Conversion Balancing and Validation
- Reduce the total cost of conversion programs by up to 25%
- Reduce data migration duration and effort by up to 50%
- Lower operational costs by up to 20%
- Achieve 100% Reconciliation for Migrated Data
- Proven migration methods with the ability to handle multiple data sources
- Hands-on delivery experience to various utilities across various regions
- Clients can pick and choose the procedure specific to their project needs
- Cost-effective, timely delivery of migration workstreams and deliverables
- On-going knowledge transfer with On-the-job training for clients' resources
- Leverage the expertise of a highly experienced consulting team with over a decade of utility industry knowledge
- Successfully migrated data onsite and offsite/online
- A variety of ETL tools are supported and available
- **Future-proof data** through data automation

Migrating to the Future with CriticalRiver!

Your utility business needs to react to changes in user choices, comply with statutes, and alleviate the risks of unforeseen events. A digital, connected enterprise model using data automation will help you achieve a superior customer experience and future-proof your data.

Though moving to the latest model can be intimidating, it doesn't have to be. Performing a readiness evaluation enables you to plan how and when to unleash the power of data automation for your utility. To learn more or to schedule an evaluation and consultation, please reach out to us utilities@criticalriver.com.

