

# TESTING AS A SERVICE

Introducing Multi-Platform Testing Services & Testing Automation for Oracle Utilities and Edge Systems



Thought **Leadership**

# Introduction

CriticalRiver announces its extension of QA/ Testing services for Oracle Utilities and Edge systems to end-user organizations wishing to outsource all or a portion of their software testing activities. This move equips customers with autonomous and scalable QA services to shift the demand from their team to ours, thereby reducing barriers and delays between the business' great ideas and the IT Department's, or System Integrator's, eventual implementation of them.

Presenting an end-to-end QA service for structured or indefinite durations aimed at one overarching objective to increase value to your project by reducing the cost, duration and burden of testing on the business team. Our structured TESTING AS A SERVICE (TaaS) incorporates the best-in-class, scalable testing services that decrease your overall ownership expenses. Thanks to our investment and expertise in methodologies, systems, offshore/nearshore model, quality development, and creativity which extend the best solution for your company.

Besides addressing your demands and operative complexities our AGILE TESTING APPROACH (ATA) enables you to focus on the complete customer journey concentrating on usability, security, production, and end-user experience.

## Test Environment Management

CriticalRiver renders a comprehensive end-to-end QA environment management service with a dedicated administration resource to examine a complete program from start to finish. We handle organizations' fundamental testing requests by employing smaller asset footprints to maintain test projects.



## Functional Testing

We provide our significant expertise at all steps of the process and work with you to ensure a robust and effective set of testing specifications. We then assign qualified staff to perform the functional testing activities and ensure each part of the process is executed according to our Agile Testing Approach methodology.

We also assign a senior leader to oversee the Testing as a Service program. This means a single point of contact for all Testing activities. This leader is committed to ensuring your Testing program is planned, executed, and completed within the approved parameters and in-line with QA best practices.

## Non-Functional Testing

Non-functional tests are done to check the system's characteristics, such as memory losses, production, or the system's robustness. Performance testing is key in non-functional testing, as well as user access, page response, and request processing. CriticalRiver provides services that proactively monitor IT solutions to confirm they are stable, scalable, and performing as expected.



## Security Testing

CriticalRiver offers cutting-edge client security testing services for system and application integrity, to help defend organizational data and Personal Identifiable Information (PII), to support data privacy and protection requirements, and to help maintain a satisfactory system safety standard. Our Security Testing service equips customers with data security analysis, comprehensive knowledge about security testing processes, and guidance on the latest challenges and vulnerabilities in the industry that could warrant additional security measures.



## Test Automation

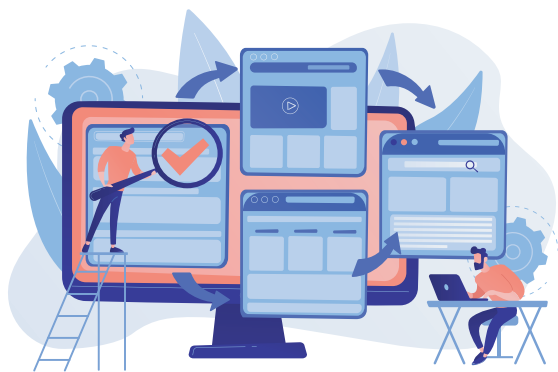
Test Automation is the most reliable way to improve software testing effectiveness, productivity, and coverage. Most of our clients are either engaged in continuous software development and enhancement, or they are obliged to support 3 or more new releases and major patches every year.

Both scenarios demand constant testing activity. The benefits of automation are to break the cycle of endless and repetitious testing, to enable instant feedback on the business risks linked to a new software release, and to maintain the relevancy of testing assets through updated test libraries with each new patch or release. Test Automation is a gamechanger in reducing the time to benefit of software advances and decreasing the costs associated with manual testing. In most cases, automation of regression testing alone decreases labor costs and duration by over 55%. That means quality results in less time and for less expense.



## OUTA, HP-ALM/ Quality Center, IBM Rational, Load Runner

CriticalRiver offers Testing as a Service on the platforms most preferred by our customers. If these platforms are not suitable for your project, we have the capabilities to compose a custom testing tool designed particularly to your requirements. Our engineers bring outstanding technical knowledge and expertise in using the latest software platforms, tools, frameworks, technologies, and standards to satisfy your Testing needs.



## Consulting Services

CriticalRiver offers enhanced QA consulting services including analysis, research, and process improvement recommendations. We can also help to evaluate our customers' project teams willingness to test, and support SR processes with Oracle to assure product defects are addressed and resolved according to industry standards.



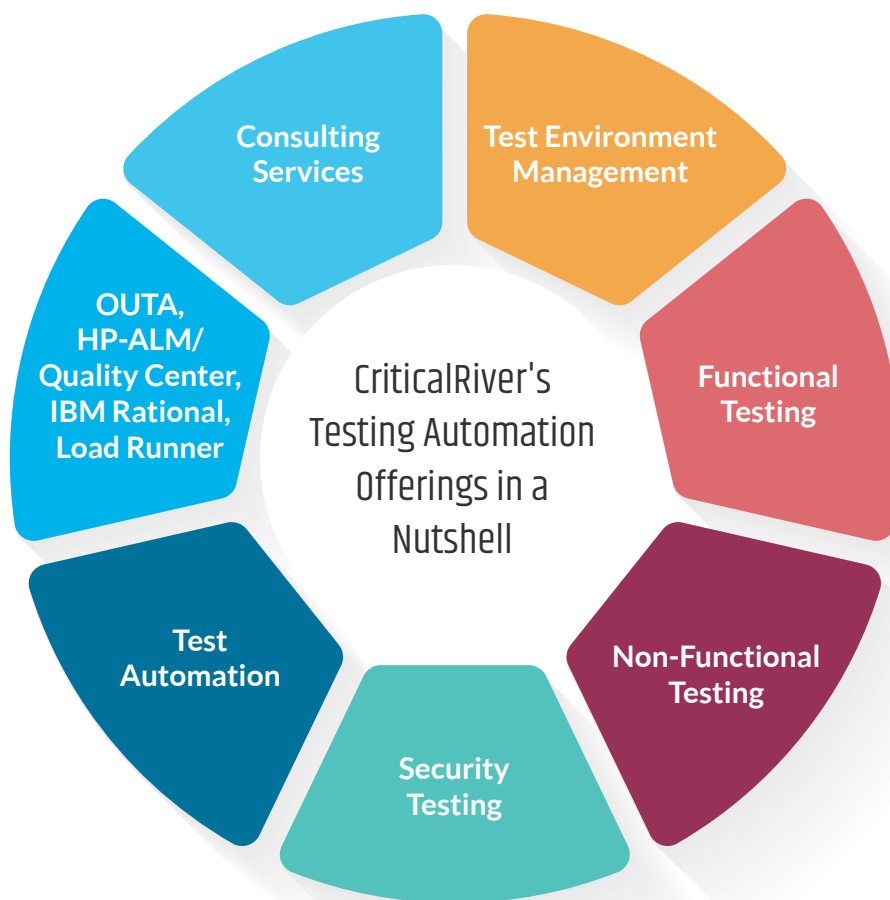
The global automation testing market size is expected to grow USD12.6 billion in 2019 to USD28.8 billion by 2024, at a Compound Annual Growth Rate (CAGR) of 18.0% during the forecast period.

- Markets and Markets Research Report



## Testing at CriticalRiver!

At CriticalRiver, we have a track record of successful testing and test automation programs in high tech, banking, manufacturing, and consumer goods. Now we're bringing this expertise to the Utilities domain to provide comprehensive Testing as a Service to support Oracle Utilities implementations and Edge systems.



For more information, please reach out to

**Scott Birdsong**, VP, Utilities | **Email: [scott.birdsong@criticalriver.com](mailto:scott.birdsong@criticalriver.com)**

For more information, [contact@criticalriver.com](mailto:contact@criticalriver.com)



CriticalRiver is a trusted digital technology consulting company with a demonstrated track record of successful technology implementations in areas such as Digital Transformation, Digital Engagement, and Digital Engineering.

We implement and offer consulting services for CRM, Supply Chain, and Integration Solutions by leveraging our skills and capabilities in cutting-edge technologies. We help enterprises simplify, automate, improve, and enhance operations and processes to scale and grow.

We are also technology partners for Salesforce, Oracle, NetSuite for consulting, implementations, managed, and advisory services. Our highly experienced consultants are experts at understanding customers' needs and delivering strategic solutions that leverage the latest technologies and industry best practices.